

August 2011

Bluegrass Chapter of IFMA
Lexington, Kentucky

Inside this Issue

- 1 Program News – Bluegrass Chapter of IFMA Roundtable Discussion
- 2 Message from the President – Mary Martin
- 3 Looking Back – Locust Trace Agra-Science Farm Site Tour
- 4 Looking Back – Locust Trace Agri-Science Tour continued
- 5 Looking Back – Locust Trace Agri-Science Tour continued
- 6 FM Topics – Topic of the Month: Zero Landfill!
- 7 Looking Back – More Locust Trace Agri-Science Tour
- 8 Looking Back – More Locust Trace Agri-Science Tour
- 9 IFMA FAQ – SFP FAQ
- 10 IFMA FAQ – More SFP FAQ



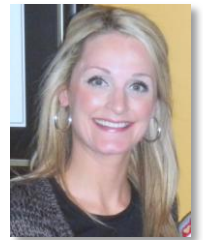
IFMA Awards of Excellence

*1997 Distinguished Member
1998 Educational Programming
2001 Small Chapter of the Year
2003 IFMA Fellow Award
2005 Newsletter Publishing*

BLUEGRASS BLUEPRINT

Program News

*Casey Cropper
Program Chair and Vice President
Bluegrass Chapter of IFMA*



August Program

WHAT: Bluegrass Chapter of IFMA Roundtable Discussion

- Join your chapter leaders to discuss future plans.
- Share ideas on Membership, Programs, etc.

WHO: Bluegrass Chapter Members

- *All members are encouraged to attend this important meeting – we want to hear your voice!*



WHEN: Tuesday, August 9
11:30 am Lunch, Meeting at Noon

WHERE: Lexington Herald-Leader Building
100 Midland Avenue
Lexington, Kentucky 40508-1999

SAVE THE DATE

What: Bluegrass Chapter of IFMA Christmas Party
When: Tuesday, December 13, 2011 from 6 p.m. – 8 p.m.
Where: Malone's Banquets (located above Sal's)
3373 Bates Creek Road
Lexington, KY 40502



Message from the President

Mary Martin

*President, Bluegrass Chapter of IFMA
HMC Service Company*

H-O-T !!! Summer is here!

I wanted to thank our speakers for the July Site Visit that took us through the new **Locust Trace Agri-Science** building. One of the newest schools that is being built in Fayette County. **Thank you** to CMTA Engineers, Tate- Hill- Jacobs Architects, Messer Construction and Thermal Equipment Sales. I also wanted to thank those IFMA members who came out - some brought guests - to tour this amazing facility.



Mary Martin and Glenda Cooper

This is a one of a kind facility focusing on Agri-Science, featuring Veterinarian Science, Food Science, Equestrian Science, and animal Science. This project is getting rave reviews around the world. Many foreign nations have called to comment on the facility and to gain additional information on this schooling concept to bring back to their own countries. Fayette County Schools is on the cutting edge with sustainability and is the front runner for this type of project and curriculum. Thanks to everyone who was a part of our program.

As we enter the second half of the year, we would like to take some time to discuss where our IFMA group is headed. We would like to hold a round-table discussion in August and make plans for the rest of the year and next year. Attendance has been down over the last few months and we do hope everyone will join us to discuss how we can get IFMA back to the levels of 2008. We would also like to discuss any ideas you all may have for membership, programs, etc. Please make a concerted effort to try and make the August meeting and bring all your ideas with you. We want to see our group flourish and we can only do that with the help of everyone involved.

Hope to see you all in August!

Mary

Chapter Officers

President

Mary Martin
HMC Service Company
859-277-7760
martinm@hmcservice.com

Vice President

Casey Cropper
Comstock Brothers Electric
859-509-1281
ccropper@cbehq.com

Treasurer

Roger Kirk, CFM, CFMJ
Fayette County Public Schools
859-381-3967
biscuit7@insightbb.com

Secretary

Diana Lynn Hubbard-Caskey, CFM
AT&T Mobility
606-925-6137
DH8991@att.com

Immediate Past President

Lynn Pearson, CFM
Coleman Group Property Services
859-255-8855
lpearson@colemangroup.net

Committees

Programs

Casey Cropper
Comstock Brothers Electric
859-509-1281
ccropper@cbehq.com

Community Projects & Events

Mary Martin
HMC Service Company
859-277-7760
martinm@hmcservice.com

Casey Cropper
Comstock Brothers Electric
859-509-1281
ccropper@cbehq.com

Committees

Directory

Lori Gibson, KYCID
CDC Distributors
859-588-5688
lgibson@CDCDIST.com

Communications & Newsletter

Gordon Springstead, CFM
502-608-2446
gordon.springstead@gmail.com

Membership

Lynn Pearson, CFM
Coleman Group Property Services
859-255-8855
lpearson@colemangroup.net

Marketing/Public Relations

Angela Berthold
Blue Chip Facility Services/SaniGLAZE
859-835-8493
wagak@comcast.net

Web

Lynn Pearson, CFM
Coleman Group Property Services
859-255-8855
lpearson@colemangroup.net

Golf

Mary Martin
HMC Service Company
859-277-7760
martinm@hmcservice.com

Casey Cropper
Comstock Brothers Electric
859-509-1281
ccropper@cbehq.com

Mark Clark
CORT
502-499-2779
mark.clark@cort.com

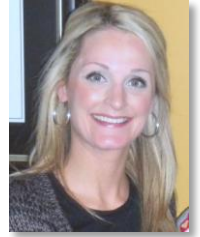
Todd Kamphaus
Executive Management Services, Inc.
513-418-1633
tkamphaus@emsinc.com

Bluegrass Chapter

www.ifmabluegrasschapter.org

Looking Back...

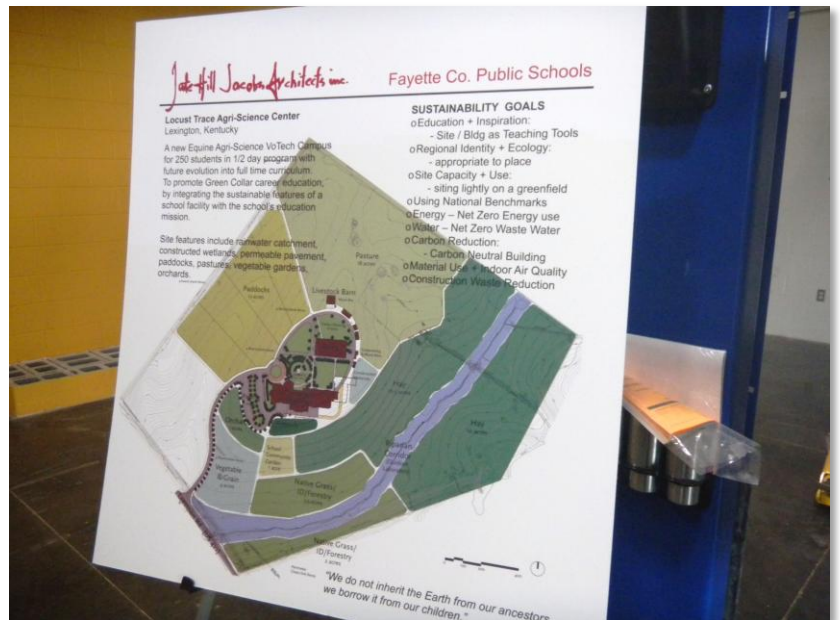
Bluegrass Chapter Meeting – July 12, 2011
Casey Cropper



Locust Trace Agri-Science Farm Site Tour



Site Plan Locust Trace Agri-Science Center, Lexington, Kentucky



Looking Back...

Locust Trace Agri-Science Facility Tour



Overview of the site plan and sustainable elements



Big Ass Fan in action – energy efficient air circulation



Tour of the Office area

Locust Trace Agri-Science Center

Lexington, Kentucky

A new Equine Agri-Science VoTech Campus for 250 students in ½ day program with future evolution into full time curriculum. To promote Green Collar career education, by integrating the sustainable features of a school facility with the school's education mission.

Site features include rainwater catchment, constructed wetlands, permeable pavement, paddocks, pastures, vegetable gardens, orchards.

Sustainability Goals

- Education + Inspiration: Site/Bldg as Teaching Tools
- Regional Identity + Ecology: appropriate to place
- Site Capacity + Use: - siting lightly on a Greenfield
- Using National Benchmarks
- Energy – Net Zero Energy Use
- Water – Net Zero Waste Water
- Carbon Reduction: Carbon Neutral Building
- Material Use + Indoor Air Quality
- Construction Waste Reduction



Inspecting the HVAC installation in the ceiling plenum

Looking Back...

More Locust Trace Agri-Science Facility Tour



Interior view of solar tube used for daylighting



Permeable paving system used to allow precipitation to percolate through areas that would traditionally be impervious and infiltrates the stormwater through to the soil below.

Locust Trace Agri-Science Center

Lexington, Kentucky

Construction Cost

\$15 million

Estimated Completion Date

November 2011

Locust Trace - Sustainable Design Principles

- A. Designed to meet LEED Gold standards
- B. Designed to meet ENERGY STAR
- C. Education + inspiration: site & building as teaching tools for "Green Collar" education.
- D. Regional identity + ecology: appropriate to place.
- E. Carbon footprint: material and equipment selection. Plant trees to balance site disturbance.
- F. Energy: net zero use. Renewable energy thru photovoltaics.
- G. Water: net zero use. Rainwater collection. On-site well water.
- H. Waste: net zero use. Constructed wetlands. Composting and muck bins.

Site – Sustainable Design Elements

- I. Site capacity + use: sit lightly on a Greenfield design to appropriate capacity.
- J. Site pavement: permeable pavers on roads and parking. Gravel paths for foot traffic.
- K. Stormwater: manage on-site. Percolate into groundwater and refresh the underground aquifer.



Big Ass Fan for air circulation, clerestory windows for daylighting, and HVAC ductwork



Rooftop solar thermal installation and exterior view of solar tube domes



FM Topics

Lori Gibson, Bluegrass Chapter Directory Chair
CDC Distributors, Inc.
Cell: (859) 588-5688 or Fax: (270) 982-3723
E-mail: lgibson@cdcdist.com

Topic of the Month: Zero Landfill

Purge those old samples and support IIDA
"Zero Landfill"!

It is full blown summer now. This is the time of year manufacturers often introduce all the newest exciting products. When I attended Neocon in Chicago last month I really enjoyed seeing so many new products all at one time. If not already, then soon you are likely to see some new products in your resource libraries. I am busy introducing new binders and portfolios of our manufacturers' products. These new tools are useful but it is a shame to just throw away the old materials! Isn't there a more sustainable option?

Zero Landfill to the rescue!

Zero Landfill is an award-winning up-cycling program. This will be the second annual event held in our IIDA City Center. Last year over 11,000 pounds of recycled samples were collected and then shared with the local creative community of artists and teachers. Think of

Pollination (drop off) will begin **Friday August 5th** starting at 2:00. Location: Quartermaster Station in Jeffersonville, IN. (Look for the signs.) Friday, August 12 will be a second day for drop off. IIDA volunteer members will be on hand to help unload! Can't get to Jeffersonville?

A special day for **Lexington donations is scheduled for Tuesday, August 9.**

For your convenience, volunteers **Sarah Easton** and **Mary Lee O'Brian** will be collecting at the Sherwin-Williams parking lot, 130 Towne Center Drive, Lexington from 10:00-2:00. Look for the U-Haul trailer with the **Zero Landfill** banner. You may reach Sarah that day at: 502-802-0199. If you have just a small load and cannot make it to the Leestown Road drop-off, **Ashley Bruggeman** may be able to make a pick up at your office. Call Ashley at 859- 536-7846 about making arrangements. This is a great time of year to start anew with a freshly organized resource area and also help creative people to get new materials for projects.

Read more about IIDA Zero Landfill at <http://zerolandfill.net/about-us/>

OUT with the OLD and IN with the NEW!

How often do you clean out your closet? It takes time to go through all the old clothes and figure out which ones you will never wear again and which still fit.

Although it is a chore, there is a sense of accomplishment when we have cleared out those useless things and created space for what is really important.

It is the same way with out-dated architectural samples taking up space in our resource areas.

Looking Back...

More Locust Trace Agri-Science Facility Tour



Clerestory windows used for daylighting



Tour continues down the main corridor



Vegetated "Green Roof"



Permeable Paving system



Exterior approach to the facility

Looking Back...

More Locust Trace Agri-Science Facility Tour



Mechanical Room



View of main building and paver installation



Classroom solar tube daylighting supplemented with T5 fluorescent lighting



Interior space with fan, solar tubes, solar thermal heating



Interior work in progress



Arena doors

IFMA FAQ

IFMA's Sustainability Facility Professional (SFP)



SFP Credential FAQs

Why is Environmental Stewardship and Sustainability now considered a core FM competency?

Although IFMA has always recognized sustainability as part of the human and environmental factors competency and as an important thread that runs through many of IFMA's competencies, the IFMA 2009 global job task analysis survey elevated it to the stature of a full competency area.

What topics does the SFP program teach?

Never before has a credential offered a deep dive education in and evaluation of sustainable facility practices. The SFP topics incorporate sustainability using a triple bottom line (economic, ecological and social) perspective following a continuous and holistic process of managing the operating lifecycle of the built environment. The SFP credential and training program integrate the new and developing areas of energy, resource management, and improvements to the work environment into the world of the facility manager—the stewards of the workplace.

The SFP teaches the facility manager to develop value-based organizationally aligned sustainability programs that go beyond addressing the obvious and simple sustainability challenges to find the next building efficiency that will improve the indoor environment, reduce fuel and resource-use to zero and have little to no impact on the environment.

For the specific topics taught by each focus area, visit [Program Topics](#).

What will the SFP help an FM professional achieve?

The SFP credential will help facility managers to:

- use knowledge-based and data-driven methods to develop solutions which provide the highest value for their building, organizations and community;
- challenge themselves and their organizations to go beyond the current thinking; take full advantage of the skills and competencies in the FM's toolkit;
- develop new and innovative sustainable solutions to facility issues; and
- gain the recognition of being an informed champion, partner and steward of the built environment in their organization and the communities in which they live and serve.

How can I earn the SFP credential?

The SFP is an assessment-based certificate program. To earn the SFP credential, candidates will need to complete the series of three IFMA SFP Credential Program focus areas and the three online SFP final assessments with a passing score of 75% or higher and submit their SFP application (with fee) to IFMA.

Are there any prerequisites to the SFP credential?

There are no specific educational or experiential prerequisites, however the SFP curriculum builds on a foundation of sound facility management knowledge. A solid understanding of FM practice is necessary for the candidate to fully comprehend and utilize the material in the program. An Essentials of FM industry overview is included in the interactive online study tools for those with limited FM experience.

Due to the dynamic and ever-changing nature of the sustainability environment, the SFP certificate will be issued with a three-year term of validity. After this time, SFPs will be expected to demonstrate their understanding of the latest developments in sustainability through an online course and assessment.

IFMA FAQ continued

When will the SFP credential be available?

The SFP credential and the self-study training and assessment program, the IFMA SFP Credential Program™, are now available. Instructor-led courses will be available in the summer of 2011.

What score is required to pass the SFP final assessments?

In order to pass each of the SFP final assessments, you must earn a score of 75% or higher on each final assessment. The number of questions and time allowed varies by focus area:

- Focus area 1: Strategy and Alignment for Sustainable Facility Management: 50 questions; 65 minute time limit. Passing score = 38+ correct questions.
- Focus area 2: Managing Sustainable Facilities: 50 questions; 65 minute time limit. Passing score = 38+ correct questions.
- Focus area 3: Operating Sustainable Facilities: 100 questions; 130 minute time limit. Passing score = 75+ correct questions.

Each final assessment must be completed in one sitting. You cannot pause the assessment and come back to it. If you do not achieve a passing score within the allotted time, you must start the assessment over.

What is the cost of the SFP program?

The cost for the program can be found on the [Pricing](#) page.

Volume discounts available on orders of two or more programs. For details or to order, contact SFPcorporatesales@holmescorp.com or call +1-888-590-6797 (USA/Canada) or +1-651-256-2822 (worldwide).

Is it possible to review or purchase only one SFP focus area instead of all three?

No. The SFP Credential program includes the combination of all three focus areas. These focus areas are designed to work together to allow the student to gain the knowledge and expertise to earn their SFP credential. The series of three focus areas, taken together and in sequence, provide a complete picture of how SFPs can improve the sustainability of their facilities in all eight major categories of sustainable facility management as defined by IFMA: energy, water, materials and resources, workplace management, indoor environmental quality, quality of services, waste and site impact.

What is the SFP application fee?

The non-refundable application fee is US\$130 for Professional/Associate Members, US\$105 for Young Professional Members and US\$210 for Nonmembers.

What if I do not pass the SFP final assessment? When can I retake the SFP final assessment?

Candidates who fail an SFP final assessment may retake it immediately. There is no limit to the number of times you can retake the final assessment. However, once you successfully complete/pass a final assessment, it will have served its purpose and will no longer be available.

How long do I have to take the SFP final assessment? Does it expire?

Access to the interactive online study tools and the SFP final assessments expires two years from the date it was activated.

After submitting my application, how long will it take to get my SFP credential?

Once a candidate has successfully earned a passing score on all three SFP final assessments and completed their SFP application, IFMA will verify their results and approve the application. Verification may take up to 30 business days

